

## CERTIFICATE OF LOCATION OF GOVERNMENT CORNER

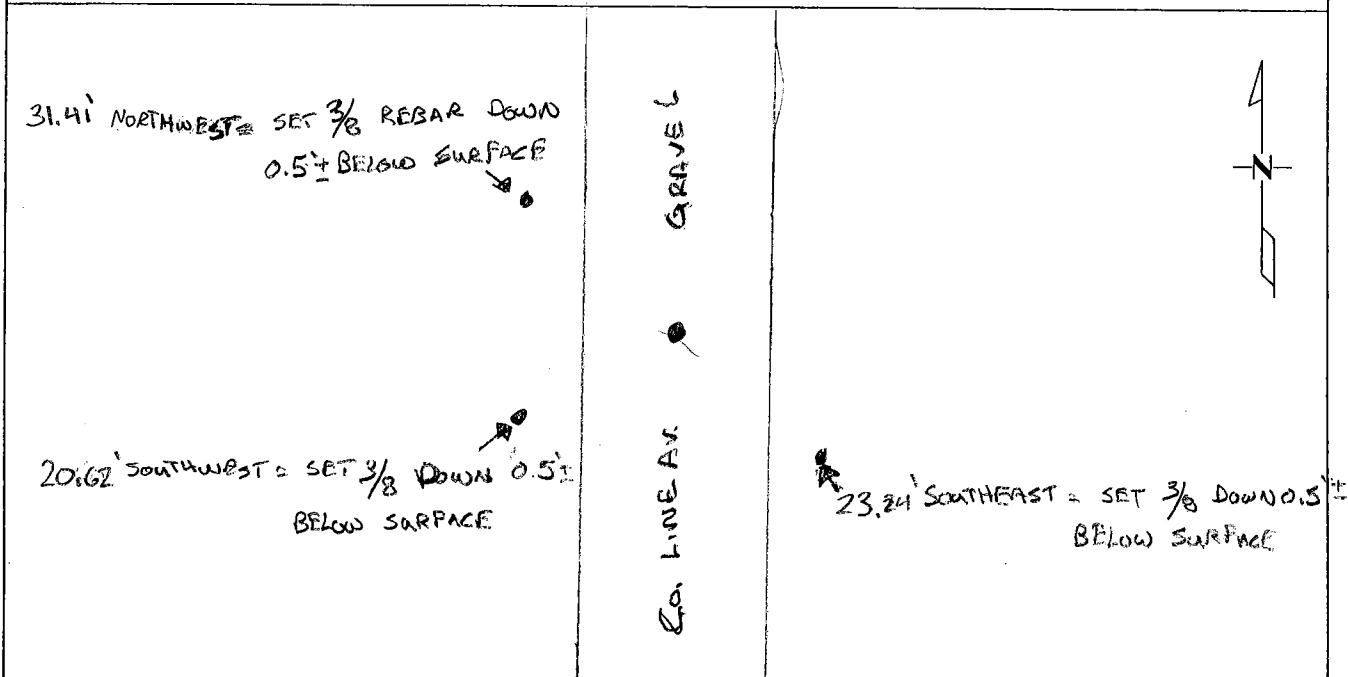
EAST QUARTER Corner of Section 25, Township 108 N, Range 44 W  
5<sup>th</sup> Principal Meridian, State of Minnesota, County of Pipestone

At the corner location shown on the sketch:

On 7/6/07 found a 1/2" CAPPA IRON REBAR # 11943 DOWN 0.6' BELOW SURFACE  
DATE

left monument as found     lowered monument     removed monument (explain)

On \_\_\_\_\_ placed a \_\_\_\_\_  
DATE



Statement of evidence for this corner location is on back of this page.

I hereby certify that this document was researched and prepared by me or under my direct supervision and that I am a licensed Land Surveyor under the laws of the State of Minnesota.

Signature [Signature] Date 10/26/07 License No. 40853

Title:  Land Surveyor     Professional Engineer     County Surveyor     County Engineer